

BCSP Profile

50 DAYS TO SUPER BOWL 50



A DAY-BY-DAY, SUPER BOWL-BY-SUPER BOWL LOOK AT THE IMPACT OF BLACK COLLEGE PLAYERS ON SUPER BOWLS I THRU 49 AS WE COUNT DOWN THE 50 DAYS TO SUPER BOWL 50

DAY 46 - Thursday, February 4

SUPER BOWL XLVI

New York Giants 21, New England 17

February 5, 2012 - Lucas Oil Stadium, Indianapolis

Four (4) Black College Players

New England Patriots (2)

Phillip Adams DB South Carolina State
Tracy White LB Howard

New York Giants (2)

Michael Coe DB Alabama State
Brian Witherspoon DB Stillman



ICONIC PHOTO: New York Giants quarterback Eli Manning holds Lombardi Trophy after thwarting New England for the second time in a 21-17 win in Super Bowl LXVI in Indianapolis.

Storyline: The New York Giants and New England Patriots took turns going on scoring runs with the Giants scoring the last 12 points to pull out a 21-17 win. The Giants scored the first nine points on an early safety and touchdown only to see the Pats score the next 17 to lead 17-9 into the fourth quarter. The Giants got two field goals and a decisive fourth-quarter touchdown on a 6-yard run by Ahmad Bradshaw to pull out the win. New England got the ball back in the final minutes but Tom Brady could not lead them to a score.

New England

Tracy White, LB (Howard)

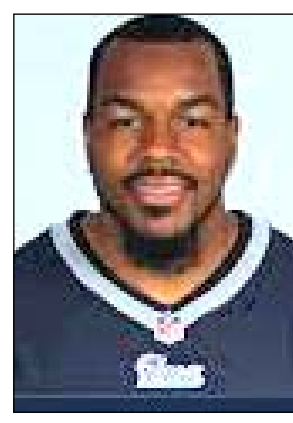
Two assisted tackles in loss to New York Giants.

- Teams with linebacker Jared Mayo to bring down running back Henry Hynoski after 13-yard pass on the Giants' second possession of the first quarter.

- Teams with Shawn Ellis to bring down running back Brandon Jacobs after 1-yard gain in second quarter.

Phillip Adams, DB (South Carolina State)

No stats in loss to New York Giants.



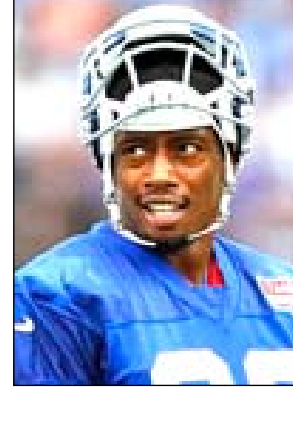
New York Giants

Michael Coe, DB (Alabama State) >

No stats in win over New England.

Brian Witherspoon, S (Stillman)

No stats in win over New England.



MVP: Eli Manning, QB, NY Giants - 30 of 40 for 296 yards, 1 TD

KEY FACTS: The key play in the Giants' fourth-quarter game-winning drive was a spectacular 38-yard sideline pass to wideout Mario Manningham. New England challenged the close play but it was upheld. Both sacks of Patriots' quarterback Tom Brady were by New York defensive end Justin Tuck. Brady was also picked off early in the fourth quarter by Chase Blackburn.



ALMOST GOTCHA! New England linebacker **Tracy White** (#58, **Howard**) tries to grab hold of New York running back Ahmad Bradshaw (#44) in Super Bowl XLVI in Lucas Oil Stadium in Indianapolis.



STIFF ARM AND ESCAPE: New York running back Ahmad Bradshaw (#44) uses a stiff arm to elude what looked like a sure tackle by New England linebacker **Tracy White** (#58, **Howard**) in Super Bowl XLVI in Lucas Oil Stadium in Indianapolis.